



EAST LAKE TARPON COMMUNITY OVERLAY

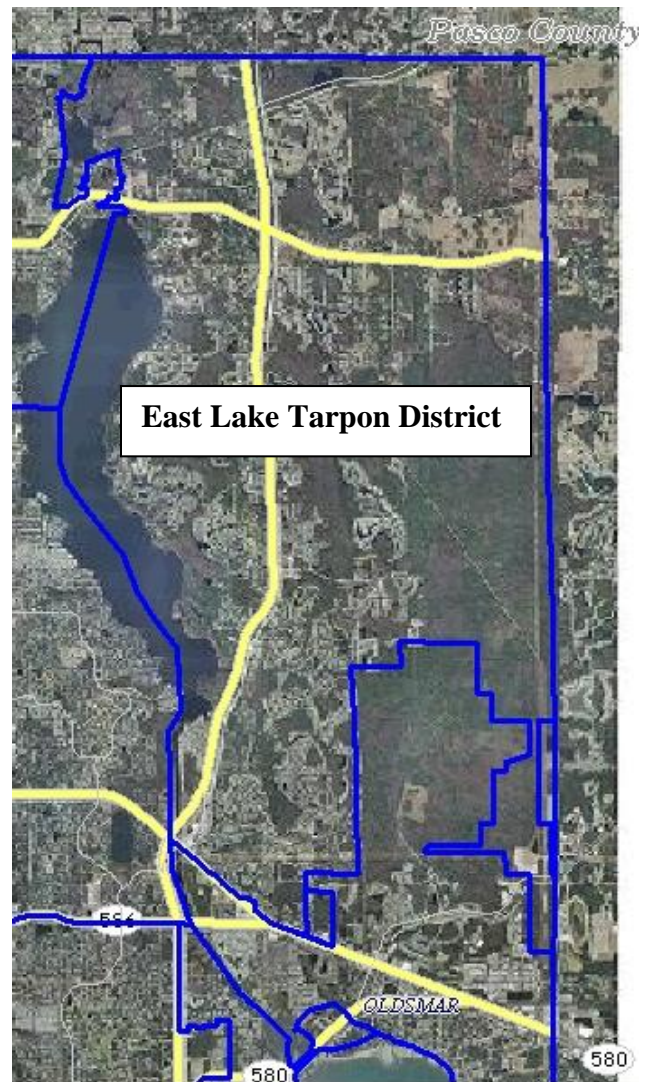
East Lake Tarpon physical area is defined by the boundaries of the East Lake taxing district in Pinellas County Florida as shown in the map below.

VISION: East Lake Tarpon is a beautiful predominately family oriented residential area in the unincorporated area of Northern Pinellas County. It is bordered to the west by Lake Tarpon, to the east by the Hillsborough County Line, to the north by the Pasco County Boundary and to the south by Tampa road excluding the city of Oldsmar. Small business and limited commercial uses serve to support the residents of the community. Lake Tarpon to the west provides recreational boating activities and the Brooker Creek Preserve to the East provides many passive recreation opportunities to the residents. This area is known for its quiet, scenic neighborhoods of unique residential development communities providing a safe and fun place to grow up.

Objective 1.18: The Board of County Commissioners will utilize a community overlay to define East Lake as a cohesive community and their decisions will support the local vision, community character, and natural environment. Small businesses support the residential character of the Community. Quality of life issues, EG: density, open space are to be considered before any zoning changes or increased density are considered.

Policy 1.18.1: Land use, zoning and conditional use decisions by Pinellas County that affect properties in East Lake should be compatible with the established residential development pattern, passive recreation areas like Brooker Creek, allow for recreational boating, fishing and water activities consistent with the character of East Lake, and/or enhance the viability of local businesses that serve the community.

Policy 1.18.2: The quality of life and the residential character of the East Lake community will be protected by retaining sufficient acreage on the Future Land Use Map (FLUM) for businesses that serve the local residents, by supporting local boating, by establishing local gathering places and by protecting the natural environment that borders both the western and eastern boundaries.



Policy1.18.3: All future development in East Lake should be compatible with the community and surrounding residential properties and fit within height, scale and criteria of the current comprehensive plan relative to scenic corridors.

Policy1.18.4: Pinellas County will consider the residential and scenic use of East Lake and Preserve Boundaries when making land use, zoning and conditional use decisions in the Community.



Policy1.18.5: Pinellas County will work to enhance strong communications between the County and East Lake businesses and residents.

Objective 1.19: The natural boundaries to the East (Brooker Creek Preserve) and West (Lake Tarpon) of East Lake will be preserved and enhanced as they provide lake and environmental resource-based recreation functions dependent on these scenic lands.

Policy1.19.1: Land use, zoning, conditional use and project decisions by Pinellas County and other agencies will place a priority on the protection of environmental lands, lake and marine habitats and dependant species.



Policy1.19.2: The County will strive to maintain scenic corridor designation of East Lake road (County Road 611) and consider this residential oriented scenic corridor designation when evaluating zoning changes or expansion of commercial zones in the East Lake area.

Objective 1.20: Identify and prioritize infrastructure improvements necessary to maintain public safety and quality of life of East Lake Tarpon.

Policy1.20.1: Pinellas County will identify infrastructure improvements that support the Vision for East Lake and include them within the Capital Improvements Element of the Pinellas County Comprehensive Plan and/or in other applicable implementing plans or programs.

Policy 1.20.2: In determining priorities for infrastructure improvements Pinellas County will consider input from the community.

Public comment welcome.

For more information or to comment or contribute to this document please contact:

Council of North County Neighborhoods, Inc. (CNCN)

John Miolla (johnm@cncnpc.org)

Or visit our website www.cncnpc.org and comment in the public forum.